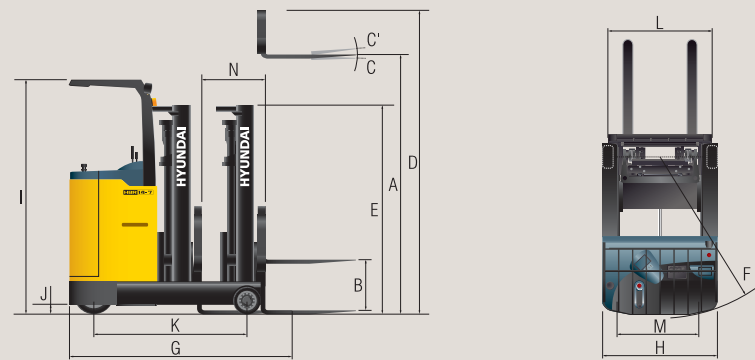


Dimension



Specification

Description		Unit	HBR 14-7	HBR 15-7	HBR 18-7	HBR 20-7	HBR 25-7	
PERFORMANCE	Load Capacity	kg(lb)	1,350(2,975)	1,500(3,300)	1,800(3,950)	2,000(4,400)	2,500(5,500)	
	Load Center	mm(in)	500(19.6)	500(19.6)	500(19.6)	500(19.6)	500(19.6)	
	Fork	Lifting Speed	Load	mm/sec(fpm)	300(59.0)	290(57.1)	280(55.1)	280(55.1)
			Unload	mm/sec(fpm)	480(94.4)	480(94.5)	480(94.5)	430(84.6)
		Lowering Speed	Load	mm/sec(fpm)	500(98.4)	500(98.4)	500(98.4)	500(98.4)
			Unload	mm/sec(fpm)	450(88.6)	450(88.6)	450(88.6)	450(88.6)
	Body	L x W x T	mm(in)	900x100x35(35.4x3.9x1.4)	900x100x35(35.4x3.9x1.4)	900x100x35(35.4x3.9x1.4)	1,050x100x45(41.3x3.9x1.8)	1,050x100x45(41.3x3.9x1.8)
		Travel Speed(Unloaded)	km/hr(mph)	10.9(6.8)	10.7(6.6)	10.2(6.3)	11.8(7.3)	11.7(7.3)
		Gradeability (Loaded)	% (deg)	28.3(15.8)	27(15.7)	23.8(13.4)	17.1(9.7)	15.2(8.6)
		Weight (Unloaded)	kg(lb)	2,236(4,929)	2,304(5,079)	2,439(5,377)	2,732(6,022)	2,789(6,148)
DIMENSION	A Max. Lifting Height	mm(in)	3,000(118.1)	3,000(118.1)	3,000(118.1)	3,000(118.1)	3,000(118.1)	
	B Free Lifting Height	mm(in)	357(14.0)	357(14.0)	357(14.1)	415(16.3)	415(16.3)	
	C Tilting (Forward)	% (deg)	(3)	(3)	(3)	(3)	(3)	
	C' Tilting (Backward)	% (deg)	(5)	(5)	(5)	(5)	(5)	
	D Max. Height	mm(in)	4,025(158.5)	4,025(158.5)	4,025(158.5)	4,030(158.7)	4,030(158.7)	
	E Min. Height	mm(in)	2,003(78.9)	2,003(78.9)	2,003(78.9)	2,040(80.3)	2,040(80.3)	
	F Outside Turning Radius Min.	mm(in)	1,550(61.0)	1,640(64.6)	1,775(69.9)	1,795(70.6)	1,985(78.1)	
	G Length to Fork	mm(in)	2,085(82.0)	2,085(82.1)	2,085(82.1)	2,330(91.7)	2,330(91.7)	
	H Overall Width	mm(in)	1,095(43.1)	1,095(43.1)	1,095(43.1)	1,230(48.4)	1,230(48.4)	
	I Overhead Guard Height	mm(in)	2,258(88.8)	2,258(88.9)	2,258(88.9)	2,294(90.3)	2,294(90.3)	
	J Ground Clearance	mm(in)	85(3.3)	85(3.3)	85(3.3)	85(3.3)	85(3.3)	
	K Wheel Base	mm(in)	1,250(49.2)	1,350(53.1)	1,500(59.1)	1,500(59.1)	1,700(66.9)	
	L Wheel Tread - Front	mm(in)	976(38.4)	976(38.4)	976(38.4)	1,090(42.9)	1,090(42.9)	
	M Wheel Tread - Rear	mm(in)	610(24.0)	610(24.0)	610(24.0)	708(27.9)	708(27.9)	
N Reach Stroke	mm(in)	485(19.1)	585(23.0)	735(28.9)	650(25.6)	850(33.5)		
ELECTRICAL MOTOR	Drive Motor	kW/ps(type)	5.0/6.8(SEM)	5.0/6.8(SEM)	5.0/6.8(SEM)	5.0/6.8(SEM)	5.0/6.8(SEM)	
	Pump Motor	kW(ps)	9.5(12.9)	9.5(12.9)	9.5(12.9)	9.5(12.9)	9.5(12.9)	
BATTERY	Capacity	Ah	280	280	300	335	335	
	Weight	kg(lb)	480	480	540	560	560	
CONTROLLER	Control Type	-	MOSFET	MOSFET	MOSFET	MOSFET	MOSFET	
	Steering System	-	EPS	EPS	EPS	EPS	EPS	

Option	MAST	TIRE	OVER SHOE (mm)
	Duplex / Triplex	HBR 14/15/18-7	1,300 / 1,500 / 1,700 / 1,800
	<b>BATTERY</b> 335AH : HBR 14/15/18-7, 365AH : HBR 20/25-7	OPTION1 : DRIVE(Rubber), LOAD(Rubber), CASTER(Rubber)	MCV : 4-SPOOL
	<b>FORK</b> HBR 14/15/18-7(mm) : 750 / 850 / 1,050 / 1,200 / 1,350 / 1,500 HBR 20/25-7(mm) : 900 / 1,000 / 1,200 / 1,350 / 1,500 / 1,650 / 1,800	OPTION2 : DRIVE(Urethane), LOAD(Urethane), CASTER(Urethane) HBR 20/25-7 OPTION1 : DRIVE(Urethane), LOAD(Urethane), CASTER(Urethane)	COLD STORAGE <b>BATTERY CARRIER</b> <b>BEACON</b> <b>CE, UL "E" &amp; "EE"</b> <b>BATTERY CHARGER</b> (3 ∅ 410V, 3 ∅ 440V)

HYUNDAI BATTERY FORKLIFTS

HBR 14/15/18/20/25-7



Photo may include optional equipment.



**Head Office**  
(Sales Office)  
1 CHEONHA-DONG, DONG-KU, ULSAN, KOREA  
Tel: (82) (52) 230-7970, 7729 Fax: (82) (52) 230-7979, 7720

**U.S. Operation**  
Hyundai Construction Equipment U.S.A., Inc.  
955 ESTES AVENUE ELK GROVE VILLAGE IL. 60007  
Tel: (1) 847-437-3333 Fax: (1) 847-437-3574

**European Operation**  
Hyundai Heavy Industries Europe N.V.  
VOSSENDAAL 11, 2440 GEEL, BELGIUM  
Tel: (32) 14-562200 Fax: (32) 14-593405 - 06

PLEASE CONTACT

www.hyundai-ce.com

2005. 7 Rev 0.

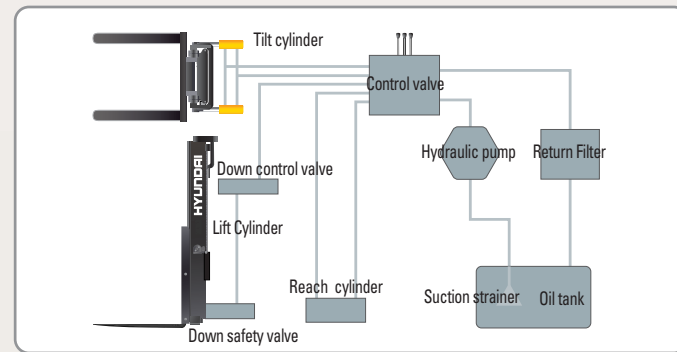


# Superior Power & Optimal Performance

Smooth running, efficient and ergonomically designed, HBR14/15/18/20/25-7 series are built to meet your needs.



■ Photo may include optional equipment.



### State-of-the-art Hydraulic System

The latest large-capacity hydraulic system reacts quickly during operation and the low noise control valve increases both efficiency and durability.



### Minimum turning radius

Compact design suitable for narrow aisle operation guarantees work efficiency and maximum space utilization.



■ Photo may include optional equipment.



### Excellent Gradeability Operation

A powerful drive motor and four wheel configuration provides for exceptional stability and excellent gradeability.



### Electric Power Steering(EPS)

EPS assures effortless steering allowing less fatigue to the operator. Machine performance and battery life is also enhanced.



### Versatile Reach Stroke

Multi-roller reach assembly provides for a smooth, controlled and safe load handling system, extended reach allows unsurpassed versatility.



### Anti Roll Back

When restarting after stop on a slope, an anti-roll back function ensure operational safety.

### High Technology SEVCON Controller

The efficient, almost noiseless, 16Khz(high frequency) SEVCON controller provides smooth quiet operation and protection for low & high voltage, overheating and fault recording.



### Drive Motor & Hydraulic Motor

Efficient Prestolite DC motor guarantees reliability and a optimized motor design provides for low noise levels. Temperature sensor and Brush Wear indicators ensure long motor life.



■ Photo may include optional equipment.

## Comfortable Operation

A design based on human engineering relieves fatigue and increases operator's efficiency.



### Newly Designed Steer Control Handle

A newly designed steering control coupled with our new Electric Power Steering control gives the operator exceptionally smooth and controlled steering for tight spaces.



### User Friendly Hydraulic Control

Minimal operator effort is required for precise, safe and productive control. As a standard layout is used, the operator learning curve is lessened.



### Accelerator

The accelerator control provides the operator with precise and smooth directional control.



### New High Visibility for Safe Operation

The operator is able to work with increased safety and accuracy due to a wider mast view.



### Perfect Fit For Busy Operations

An ergonomically designed operator's compartment enables the driver to select the most comfortable working position for increased productivity.



### Self - diagnostic LCD Monitor

The LCD monitor has a back-light system to provide a clear view of the system's operation in all environments. The monitor provides information about operation error, system fault, battery level, hour meter plus other various functions.

### Console Box & Cup Holder

Additional storage spaces are located inside the operating space for operator's convenience.



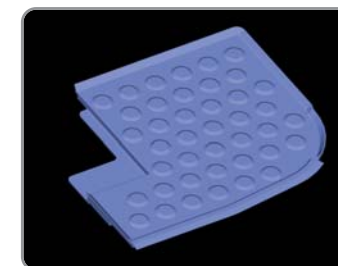
### Strong Overhead Guard

The safety overhead guard meets EEC and ANSI regulations and protects the operator during hazardous work.



### Operator's Compartment

A large plastic cushion is positioned for operator's safety and comfort.



### Non Slip Floor Mat

A heavy, vibration dampening, non-slip floor mat reduces operator fatigue and allows for increased productivity.



### Break Pedal

Smoother breaking is assured by the balanced design of the pedal and maintenance costs are lowered as the cover is easily replaceable.

# Durability, Easy Maintenance

An ideal arrangement of component parts ensures easy access and convenience for maintenance.



**Concentrated Fuse Box for Easy Inspection**



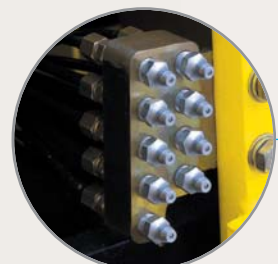
**Battery Disconnect Lever & Emergency Switch**



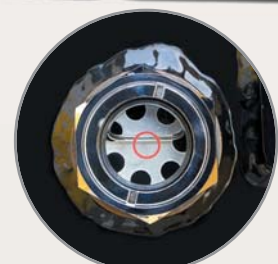
**Return Line Filter**



**Reliable MOSFET Type Controller**



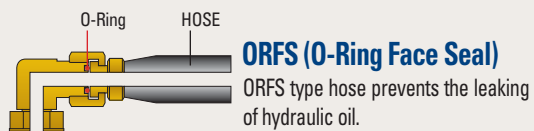
**Centralized Grease Fittings**



**Hydraulic Oil Level Gauge**



**Easy Battery Replacement**



**ORFS (O-Ring Face Seal)**

ORFS type hose prevents the leaking of hydraulic oil.



**High Visibility Headlights & Rear Work Light**



**DC-DC Converter**

DC-DC converter, satisfied with UL & CE, prevents from short circuit, overload and reverse polarity.

## Mast Specification (HBR 14/15/18-7)

Mast Type	Maximum Fork Height mm(in)	Overall Height (Lowered) mm(in)	Free Lift mm(in)		Fwd. Tilt Angle (deg)	Bwd. Tilt Angle (deg)	Truck Weight (Unloaded) kg(lb)			Load Capacity at 500mm LC (24 in LC) kg(lb)			
			Without Load Backrest	With Load Backrest			HBR14-7	HBR15-7	HBR18-7	HBR14-7	HBR15-7	HBR18-7	
			HBR14/15/18-7	HBR14/15/18-7			HBR14/15/18-7	HBR14/15/18-7	HBR14/15/18-7	HBR14/15/18-7	HBR14-7	HBR15-7	HBR18-7
2 / Stage Limited Free Lift	V250	2,500(98)	1,753(69)	357(14)	357(14)	3	5	2,205(4,861)	2,273(5,011)	2,428(5,353)	1,350(2,925)	1,500(2,750)	1,800(3,400)
	V270	2,700(106)	1,853(73)	357(14)	357(14)	3	5	2,218(4,889)	2,286(5,039)	2,441(5,381)	1,350(2,925)	1,500(2,750)	1,800(3,400)
	※ V300	3,000(118)	2,003(78)	357(14)	357(14)	3	5	2,236(4,930)	2,304(5,080)	2,459(5,421)	1,450(2,525)	1,500(2,750)	1,800(3,400)
	V330	3,300(129)	2,153(84)	357(14)	357(14)	3	5	2,255(4,971)	2,323(5,121)	2,478(5,463)	1,350(2,925)	1,500(2,750)	1,800(3,400)
	V350	3,500(137)	2,253(88)	357(14)	357(14)	3	5	2,267(4,999)	2,335(5,149)	2,490(5,490)	1,300(2,425)	1,450(2,650)	1,800(3,400)
	V370	3,700(145)	2,353(92)	357(14)	357(14)	3	5	2,292(5,052)	2,360(5,202)	2,515(5,544)	1,250(2,325)	1,400(2,550)	1,800(3,400)
	V400	4,000(157)	2,503(98)	357(14)	357(14)	3	5	2,330(5,138)	2,398(5,288)	2,553(5,629)	1,200(2,225)	1,350(2,425)	1,700(3,250)
	V450	4,500(177)	2,853(112)	357(14)	357(14)	3	5	2,408(5,309)	2,476(5,459)	2,631(5,801)	1,100(2,000)	1,250(2,275)	1,600(3,075)
	V500	5,000(196)	3,103(122)	357(14)	357(14)	3	5	2,439(5,378)	2,507(5,528)	2,662(5,869)	1,000(1,825)	1,150(2,075)	1,450(2,775)
	V550	5,500(216)	3,353(132)	357(14)	357(14)	3	5	2,471(5,447)	2,539(5,597)	2,694(5,938)	900(1,600)	1,050(1,925)	1,350(2,600)
3 / Stage Full Free Lift	TF370	3,700(145)	1,838(72)	1,367(53.8)	831(32.7)	3	5	2,427(5,350)	2,495(5,500)	2,650(5,842)	1,300(2,425)	1,500(2,750)	1,700(3,175)
	TF400	4,000(157)	1,938(76)	1,467(57.8)	931(36.7)	3	5	2,441(5,382)	2,509(5,532)	2,664(5,874)	1,250(2,300)	1,400(2,575)	1,650(3,075)
	TF430	4,300(169)	2,038(80)	1,567(61.7)	1,031(40.6)	3	5	2,459(5,422)	2,527(5,572)	2,682(5,914)	1,150(2,100)	1,300(2,375)	1,600(2,975)
	TF450	4,500(177)	2,138(84)	1,667(65.6)	1,131(44.5)	3	5	2,477(5,461)	2,545(5,611)	2,700(5,953)	1,100(2,000)	1,250(2,300)	1,550(2,850)
	TF470	4,700(185)	2,188(86)	1,717(67.6)	1,181(46.5)	3	5	2,488(5,485)	2,556(5,635)	2,711(5,977)	1,000(1,800)	1,200(2,225)	1,500(2,750)
	TF500	5,000(196)	2,288(90)	1,817(71.5)	1,281(50.4)	3	5	2,506(5,526)	2,574(5,676)	2,729(6,017)	950(1,675)	1,150(2,125)	1,400(2,575)
	TF550	5,500(216)	2,488(97)	2,017(79.4)	1,481(58.3)	3	5	2,566(5,657)	2,634(5,807)	2,789(6,149)	800(1,450)	900(1,675)	1,200(2,225)
	TF600	6,000(236)	2,688(105)	2,217(87.3)	1,681(66.2)	3	5	2,603(5,738)	2,671(5,888)	2,826(6,230)	700(1,300)	750(1,400)	900(1,800)
	TF650	6,500(255)	2,888(113)	2,417(95.2)	1,881(74.1)	3	5	2,638(5,815)	2,706(5,965)	2,861(6,307)	600(1,125)	650(1,250)	750(1,475)
	TF700	7,000(275)	3,088(121)	2,617(103.0)	2,081(81.9)	3	5	2,673(5,894)	2,741(6,044)	2,896(6,385)	450(925)	500(1,025)	600(1,250)

## Mast Specification (HBR 20/25-7)

Mast Type	Maximum Fork Height mm(in)	Overall Height (Lowered) mm(in)	Free Lift mm(in)		Fwd. Tilt Angle (deg)	Bwd. Tilt Angle (deg)	Truck Weight (Unloaded) kg(lb)		Load Capacity at 500mm LC (24 in LC) kg(lb)		
			Without Load Backrest	With Load Backrest			HBR20-7	HBR25-7	HBR20-7	HBR25-7	
			HBR20/25-7	HBR20/25-7			HBR20-7	HBR25-7	HBR20-7	HBR25-7	
2 / Stage Limited Free Lift	V250	2,500(98)	1,790(70)	415(16.3)	415(16.3)	3	5	2,694(5,939)	2,751(6,065)	2,000(3,850)	2,500(4,925)
	V270	2,700(106)	1,890(74)	415(16.3)	415(16.3)	3	5	2,711(5,976)	2,768(6,101)	2,000(3,850)	2,500(4,925)
	※ V300	3,000(118)	2,040(80)	415(16.3)	415(16.3)	3	5	2,732(6,024)	2,789(6,150)	2,000(3,850)	2,500(4,925)
	V330	3,300(129)	2,190(86)	415(16.3)	415(16.3)	3	5	2,754(6,072)	2,811(6,198)	2,000(3,850)	2,500(4,925)
	V350	3,500(137)	2,290(90)	415(16.3)	415(16.3)	3	5	2,769(6,105)	2,826(6,231)	2,000(3,850)	2,500(4,925)
	V370	3,700(145)	2,440(96)	415(16.3)	415(16.3)	3	5	2,798(6,169)	2,855(6,295)	2,000(3,850)	2,500(4,925)
	V400	4,000(157)	2,590(101)	415(16.3)	415(16.3)	3	5	2,835(6,251)	2,892(6,376)	2,000(3,850)	2,450(4,850)
	V430	4,300(169)	2,740(107)	415(16.3)	415(16.3)	3	5	2,895(6,381)	2,952(6,507)	1,950(3,725)	2,400(4,750)
	V450	4,500(177)	2,890(113)	415(16.3)	415(16.3)	3	5	2,916(6,429)	2,973(6,555)	1,900(3,675)	2,350(4,650)
	V470	4,700(185)	2,990(117)	415(16.3)	415(16.3)	3	5	2,931(6,461)	2,988(6,587)	1,850(3,550)	2,300(4,525)
3 / Stage Full Free Lift	V500	5,000(196)	3,140(123)	415(16.3)	415(16.3)	3	5	2,953(6,510)	3,010(6,635)	1,800(3,450)	2,250(4,425)
	TF370	3,700(145)	1,840(72)	1,187(46.7)	815(32.0)	3	5	2,951(6,505)	3,008(6,631)	2,000(3,800)	2,500(4,725)
	TF400	4,000(157)	1,940(76)	1,287(50.6)	915(36.0)	3	5	2,984(6,579)	3,041(6,704)	1,900(3,625)	2,400(4,550)
	TF430	4,300(169)	2,040(80)	1,387(54.6)	1,015(39.9)	3	5	3,003(6,621)	3,060(6,746)	1,850(3,525)	2,300(4,325)
	TF450	4,500(177)	2,140(84)	1,487(58.5)	1,115(43.8)	3	5	3,028(6,676)	3,085(6,802)	1,800(3,400)	2,200(4,125)
	TF470	4,700(185)	2,190(86)	1,537(60.5)	1,165(45.8)	3	5	3,041(6,705)	3,098(6,831)	1,750(3,300)	2,100(3,950)
	TF500	5,000(196)	2,290(90)	1,637(64.4)	1,265(49.8)	3	5	3,067(6,761)	3,124(6,887)	1,700(3,175)	2,050(3,850)
	TF550	5,500(216)	2,490(98)	1,837(72.3)	1,465(57.6)	3	5	3,151(6,947)	3,208(7,073)	1,500(2,850)	2,000(3,725)
	TF600	6,000(236)	2,690(105)	2,037(80.1)	1,665(65.5)	3	5	3,198(7,049)	3,255(7,175)	1,300(2,425)	1,950(3,625)
	TF650	6,500(255)	2,890(113)	2,237(88.0)	1,865(73.4)	3	5	3,240(7,144)	3,297(7,270)	1,150(2,200)	1,500(2,850)
TF700	7,000(275)	3,090(121)	2,437(95.9)	2,065(81.2)	3	5	3,286(7,243)	3,343(7,369)	700(1,475)	1,200(2,425)	

※ STANDARD

## Load Capacity

